

New York Grape Production and Utilization Statistics

The following charts illustrate data included in the New York Agricultural Statistics 2007-2008 Annual Bulletin and specifically use tables 31-34 on pages 33 and 34 of the printed book

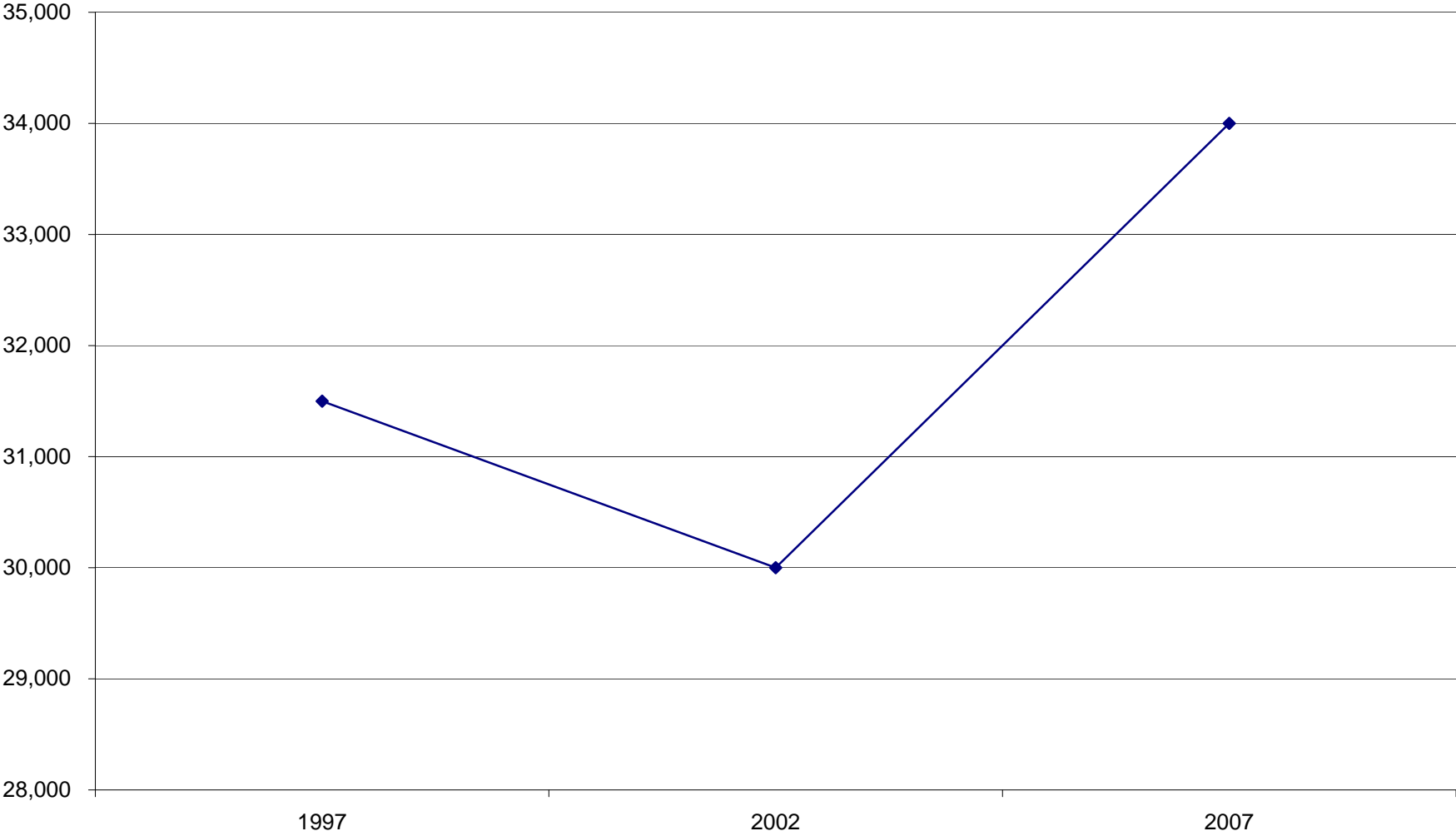
The online version of this document can be found at

http://www.nass.usda.gov/Statistics_by_State/New_York/Publications/Annual_Statistical_Bulletin/2008/08-page%2029-35%20-%20Fruit.pdf

We would like to express our gratitude to the growers and producers who take time to complete the surveys and to the “number crunchers” who make it all come together.

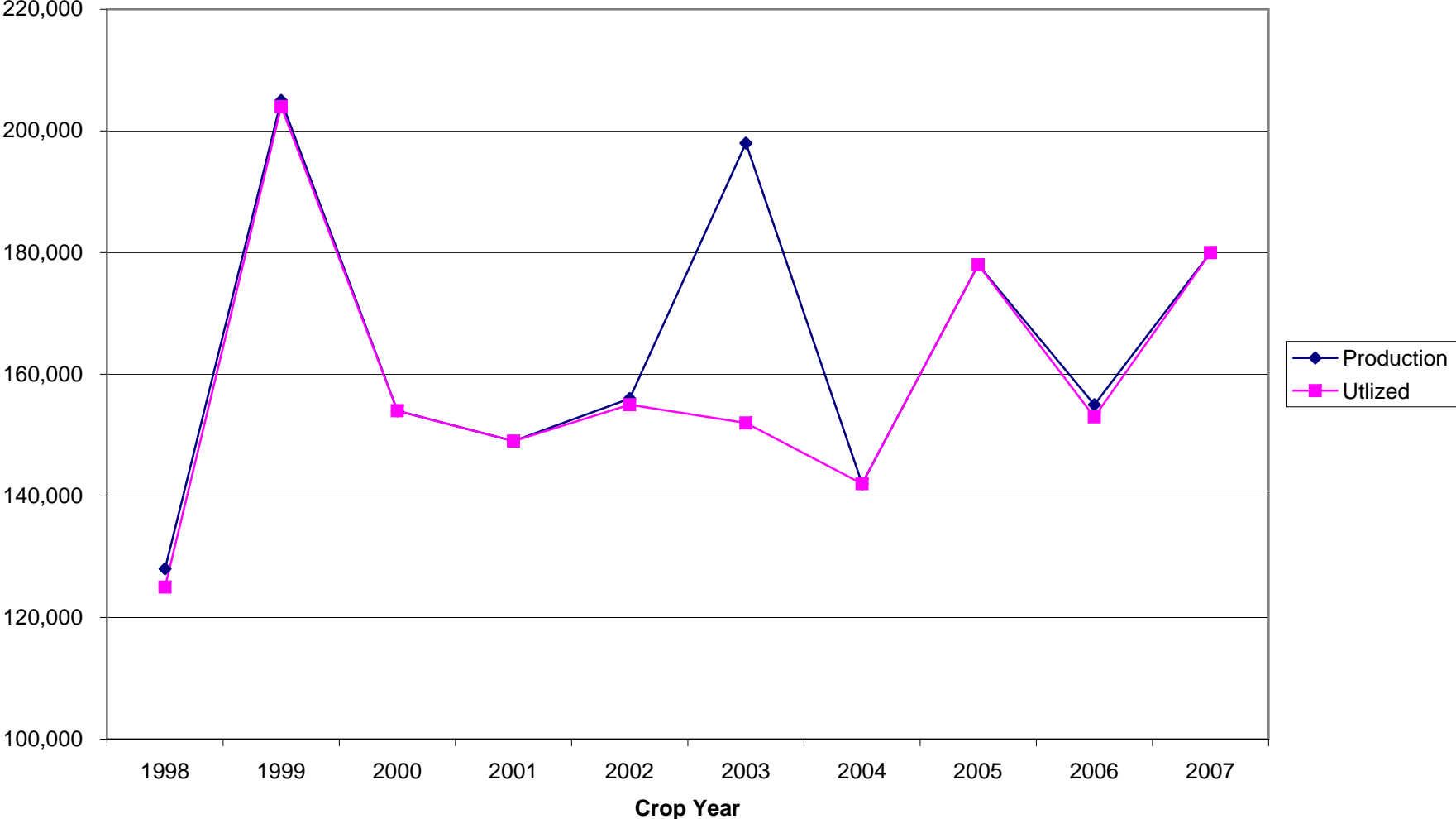
We hope you’ll find these useful.

Acres / Bearing Age -
Please note, this chart is based on a survey done every five years



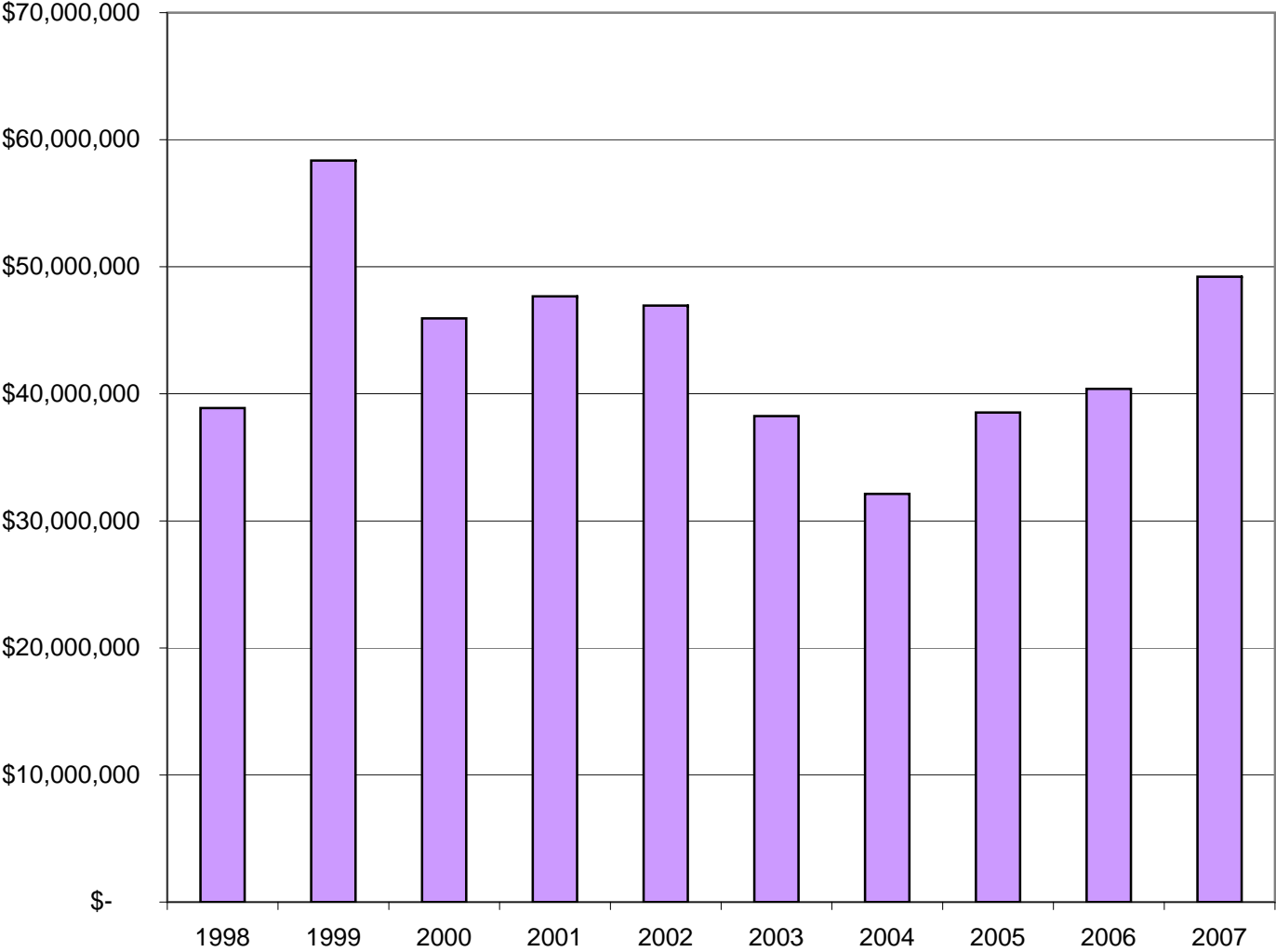
Source: NY Agricultural Statistics, 2007-2008 Annual Bulletin, Table 31

Tons Produced and Utilized for all Uses 98-07



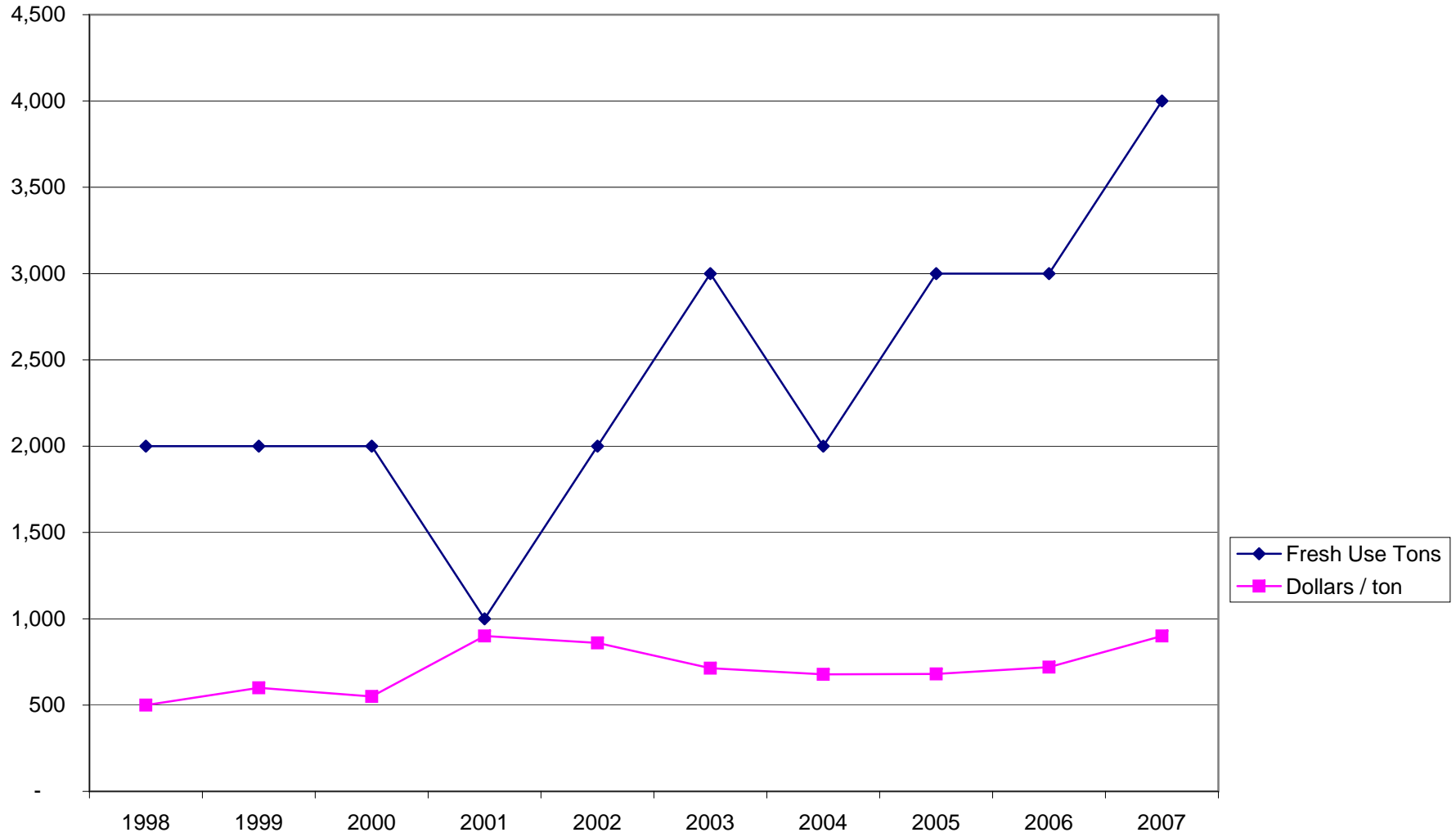
Source: NY Agricultural Statistics, 2007-2008 Annual Bulletin, Table 31

Value of Utilized Production - all products



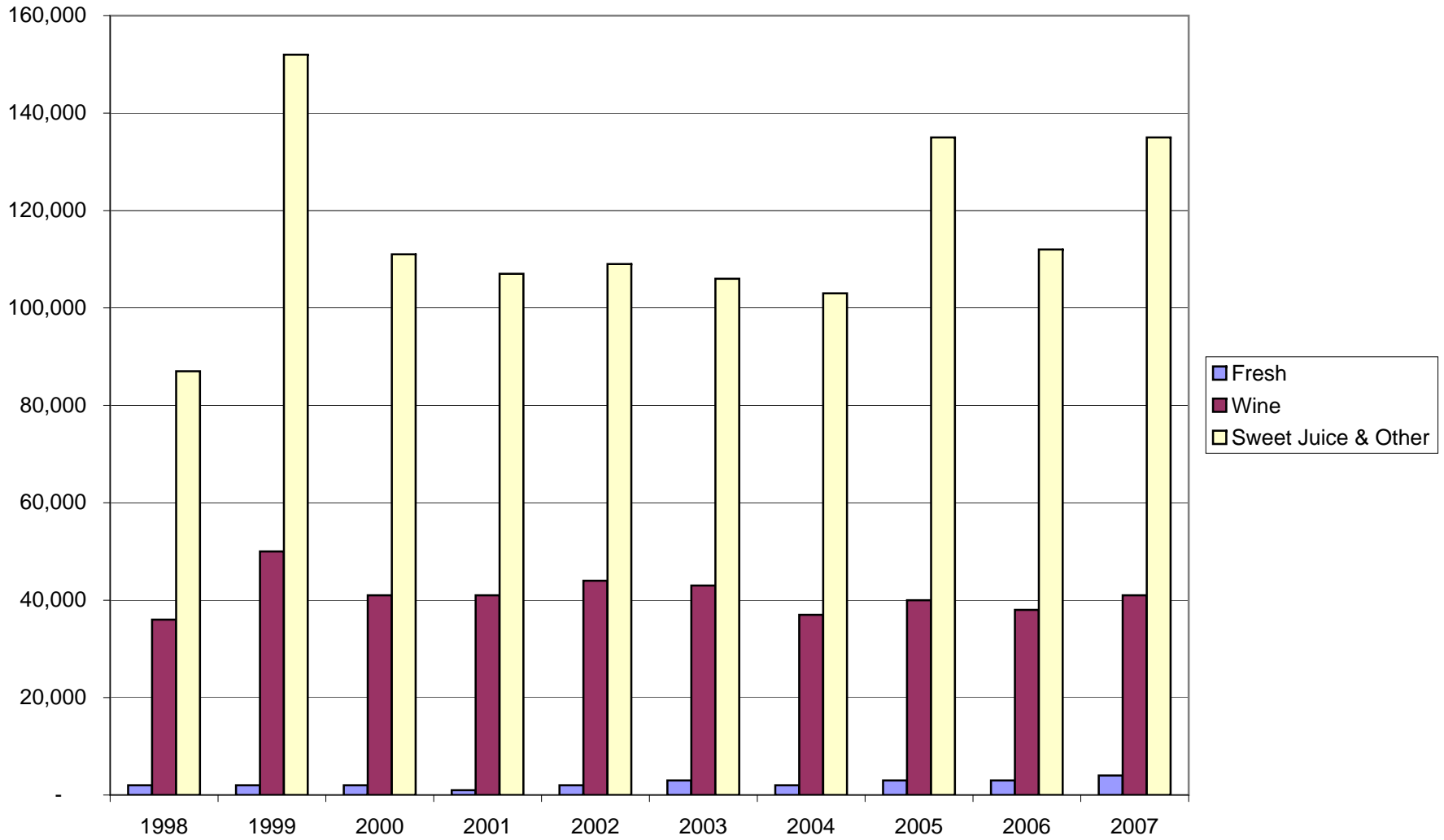
Source: NY Agricultural Statistics, 2007-2008 Annual Bulletin, Table 31

Volume and Ave Market Price of Fresh Use Grapes



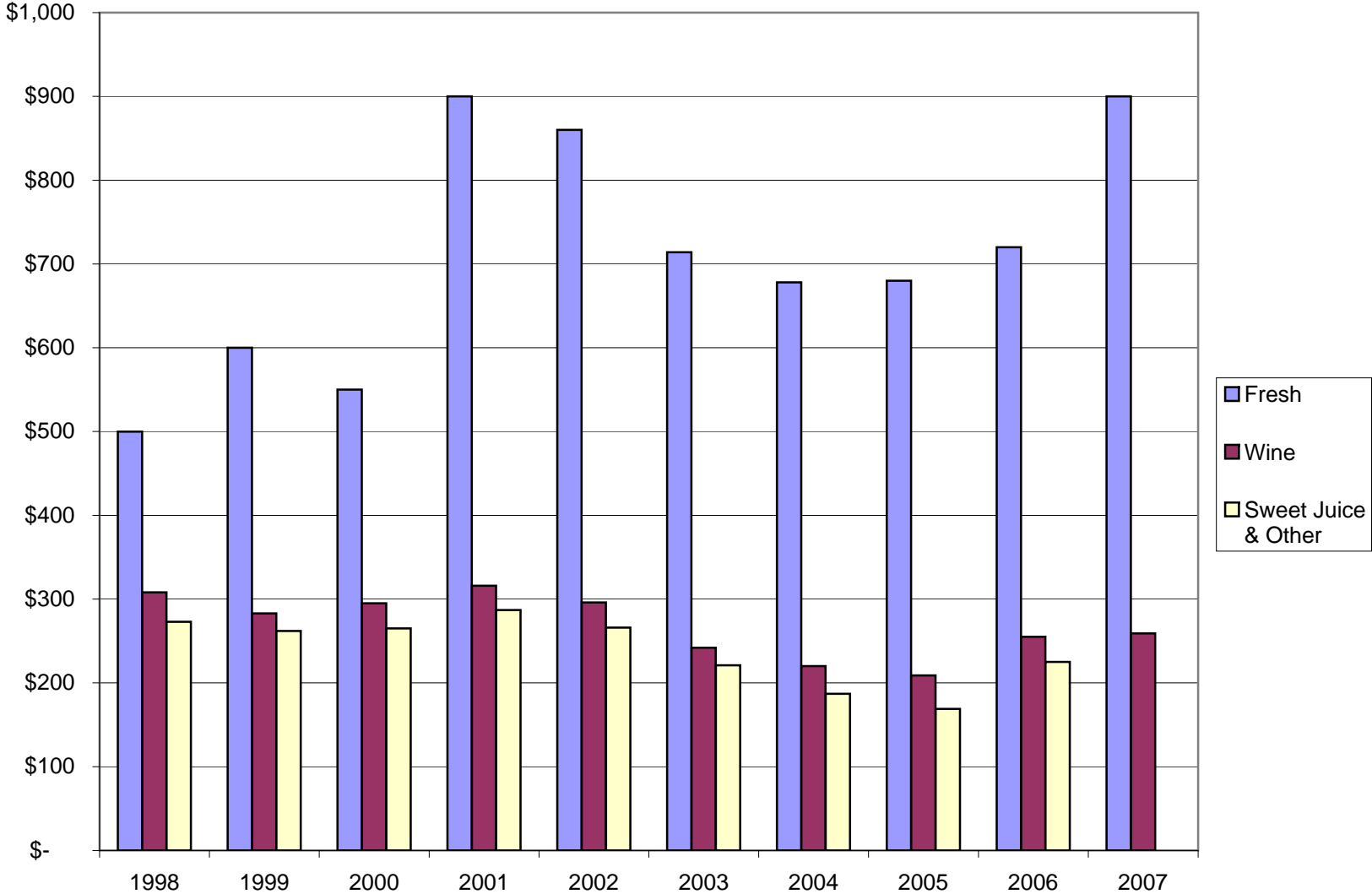
Source: NY Agricultural Statistics, 2007-2008 Annual Bulletin, Table 31

Tons of New York grapes used for various end products



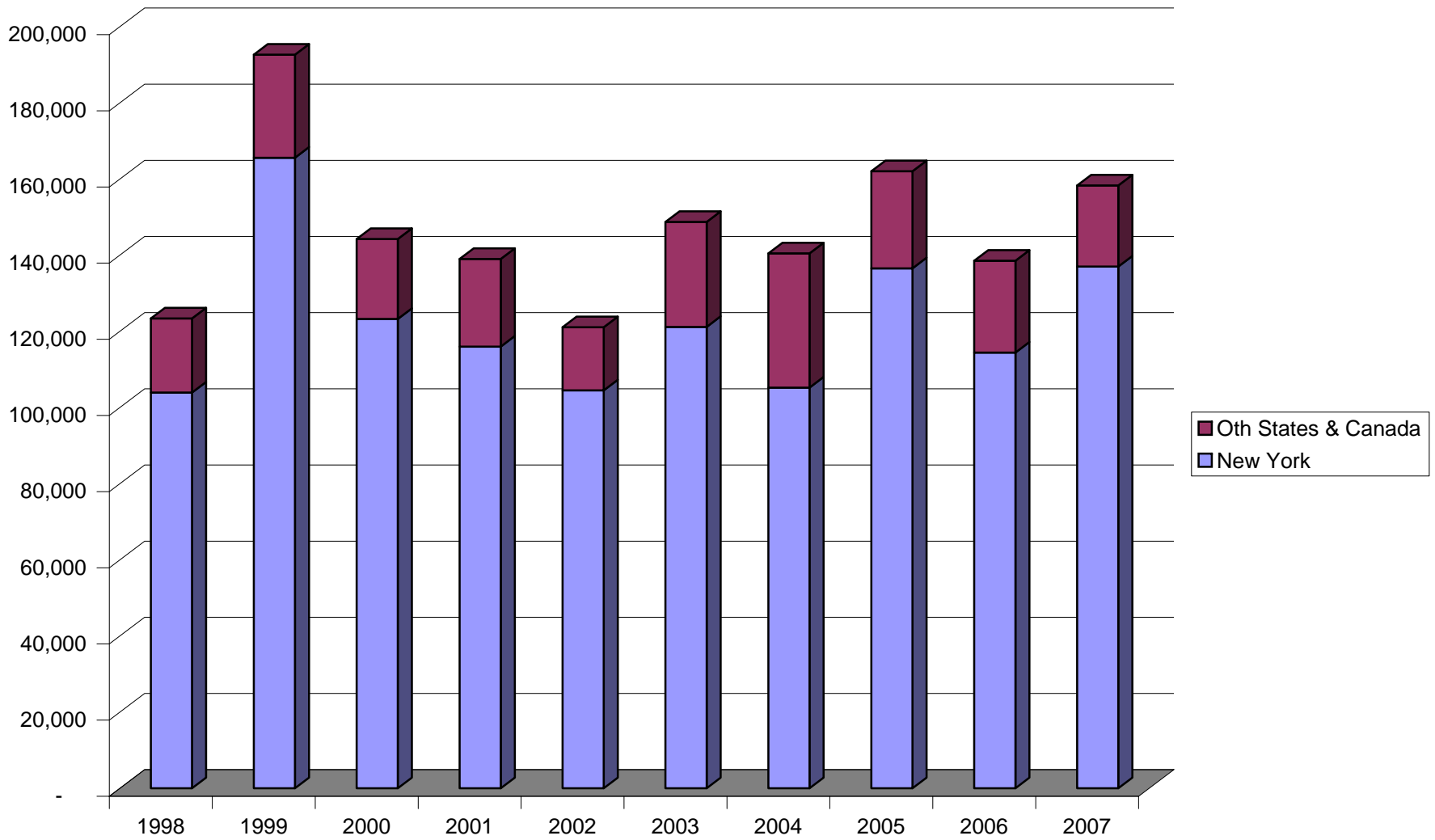
Source: NY Agricultural Statistics, 2007-2008 Annual Bulletin, Table 31

Comparative Average Market Price per Ton



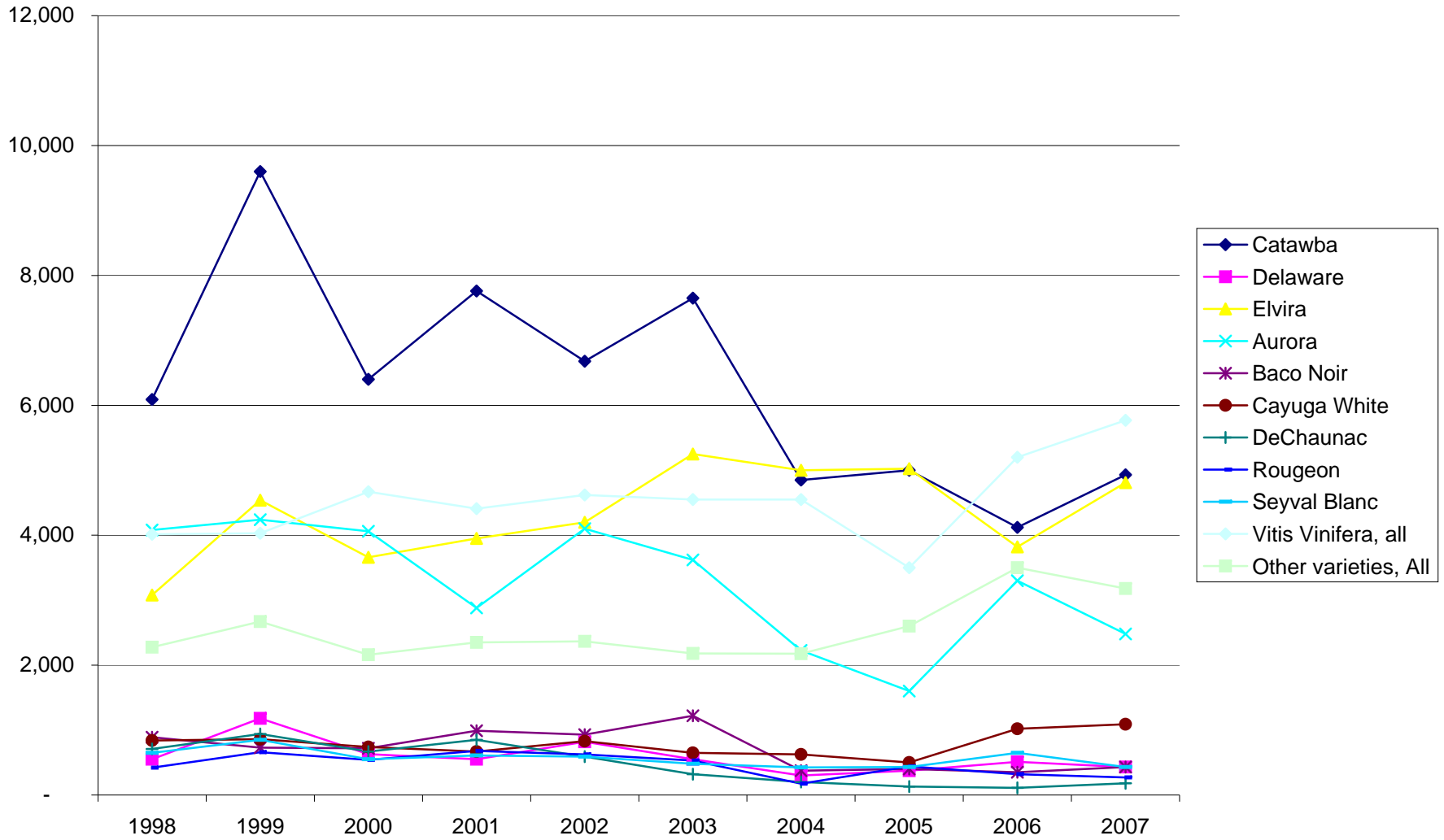
Source: NY Agricultural Statistics, 2007-2008 Annual Bulletin, Table 31

Total Grapes Processed in New York Plants



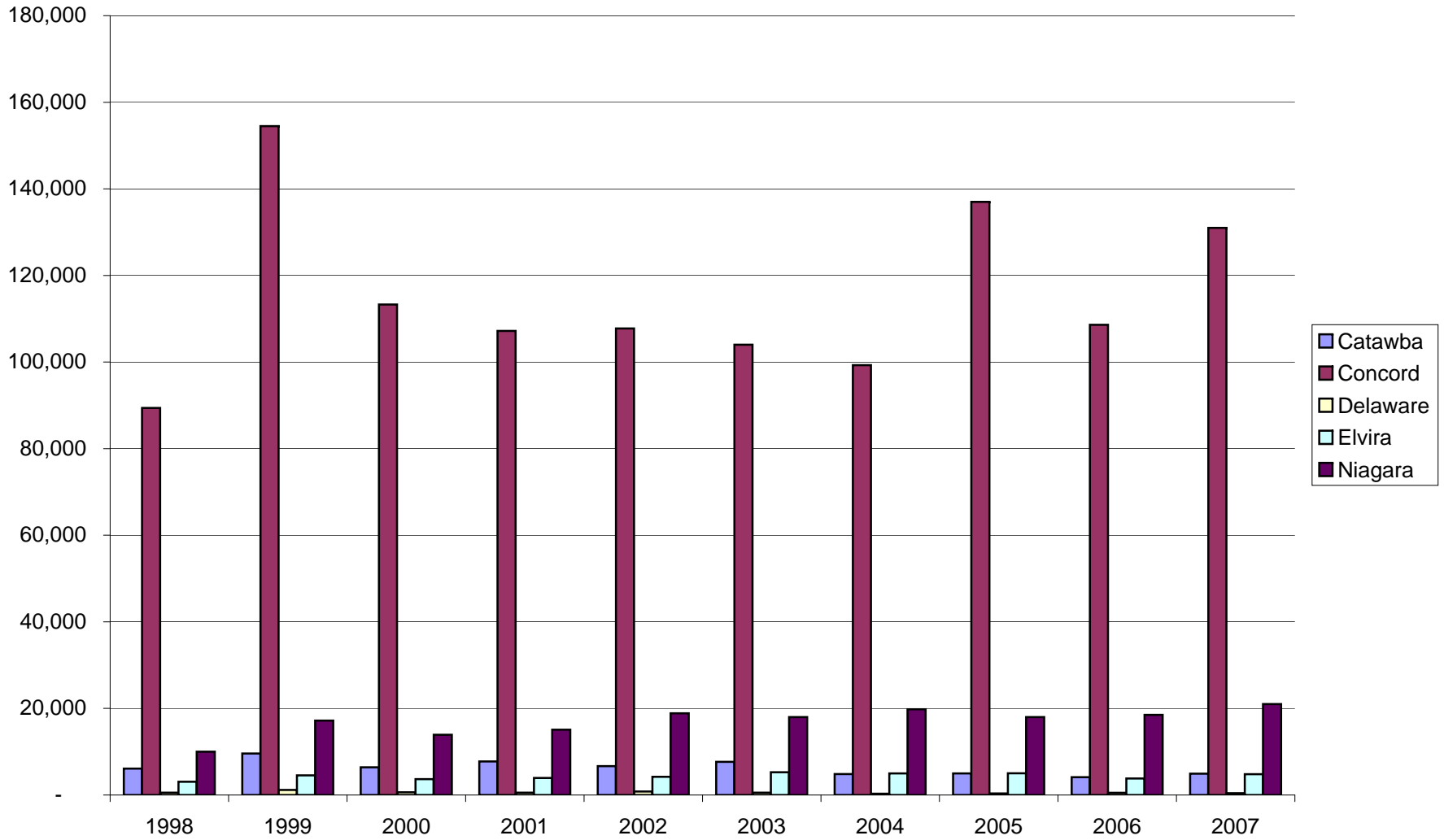
Source: NY Agricultural Statistics, 2007-2008 Annual Bulletin, Table 32

Grapes Processed by Variety



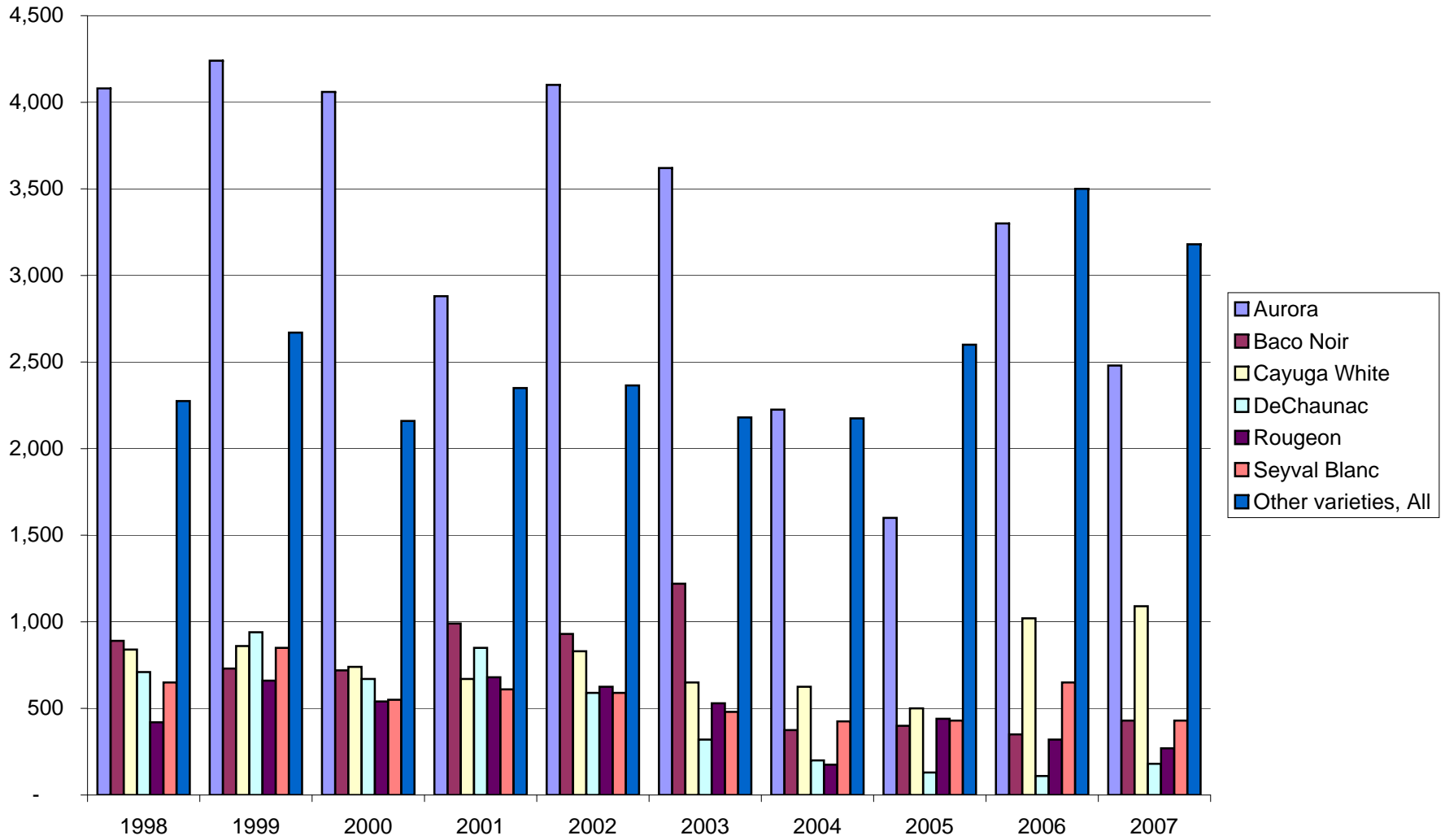
Source: NY Agricultural Statistics, 2007-2008 Annual Bulletin, Table 33

Tons Processed American Varieties



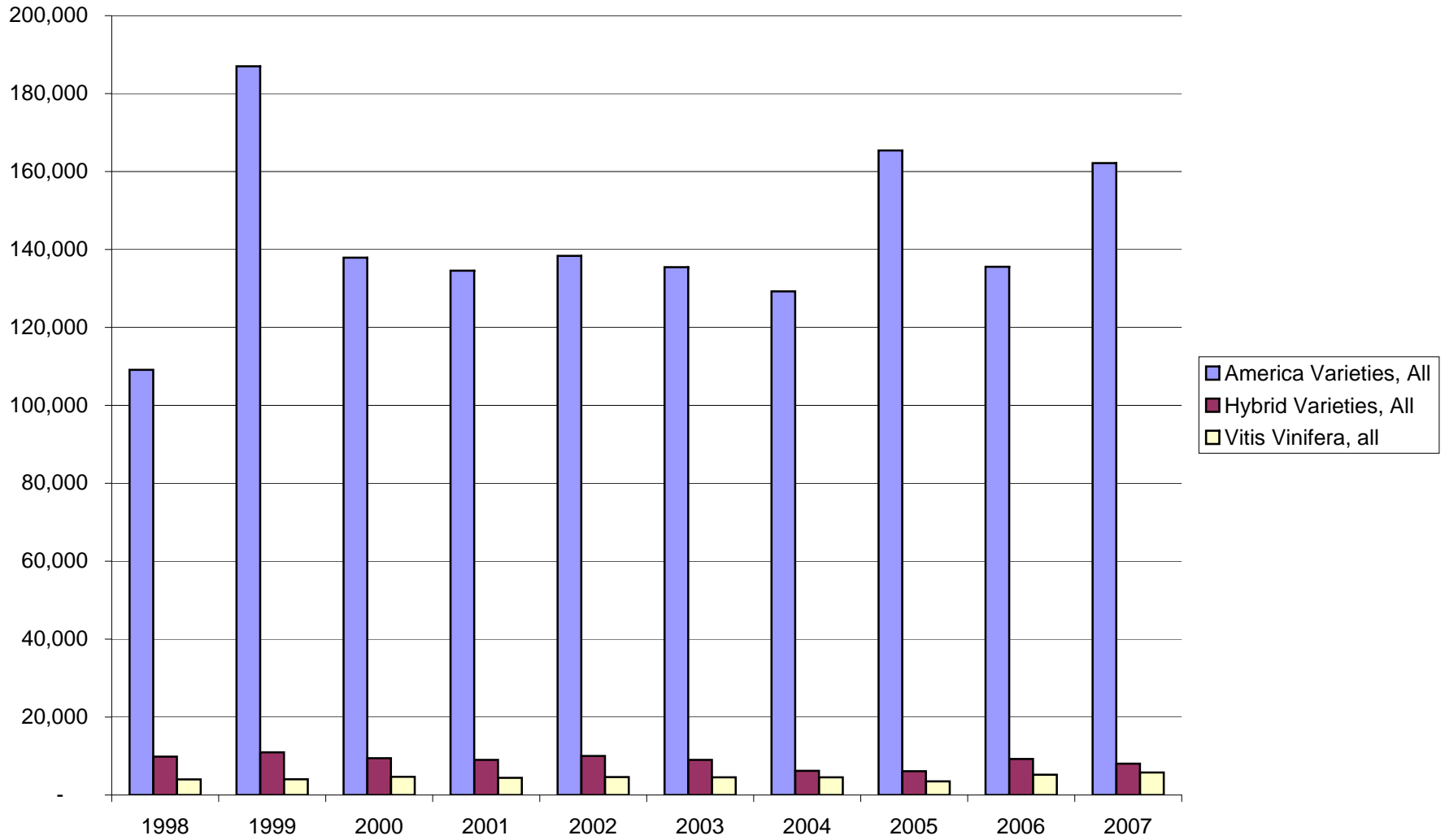
Source: NY Agricultural Statistics, 2007-2008 Annual Bulletin, Table 33

Tons Processed - French & American Hybrids



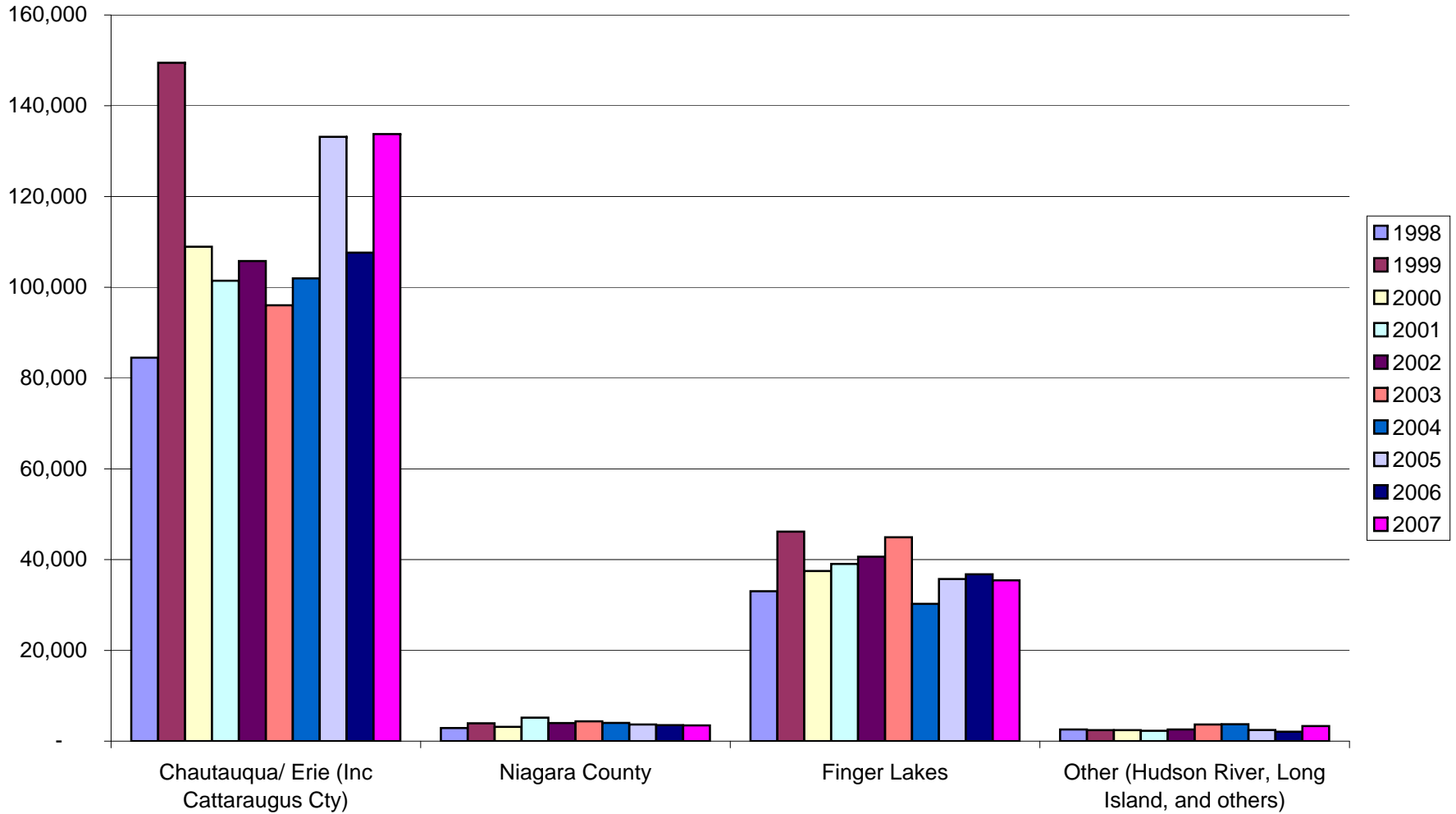
Source: NY Agricultural Statistics, 2007-2008 Annual Bulletin, Table 33

Tons Processed - By General Grape Type



Source: NY Agricultural Statistics, 2007-2008 Annual Bulletin, Table 33

**New York Grapes Processed, by Area of Production
(includes grapes received at out-of-state plants)**



Source: NY Agricultural Statistics, 2007-2008 Annual Bulletin, Table 34